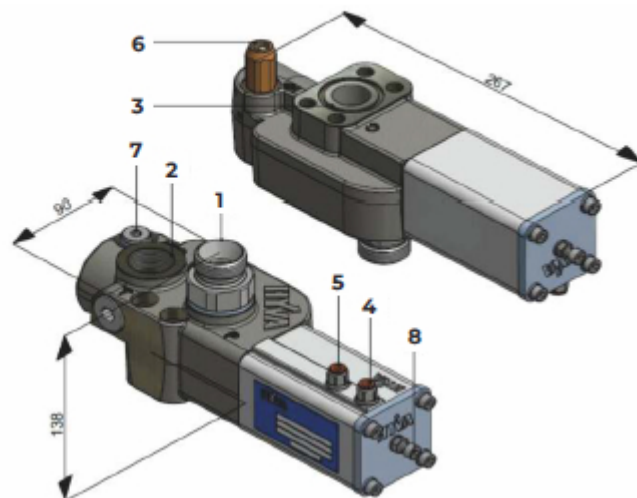


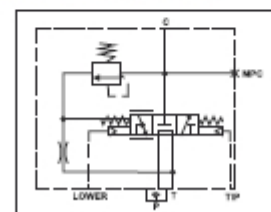
For direct mounting on

- SAE: SAE inlet of Hyva cylinder



- 1 P Pump connection
- 2 T Tank connection
- 3 C Cylinder connection SAE
- 4 Pneumatic connection (Tip) 6 mm
- 5 Pneumatic connection (Lower) 6 mm
- 6 Pressure relief cartridge
- 7 MPC Measure Pressure Cylinder (Pressure gauge point)
- 8 Adjustment screw (in the ex. 5) (To adjust the lowering speed)

#### HYDRAULIC SYMBOL



#### SAFETY:

HT valve fitted on cylinder (SAE) port provides hose burst safety function

